



CRIME SCENE SKETCHING

By

Special Agent



FBI

b6
b7c

Photograph vs Sketch

- Sketches do not replace photographs
- Sketches supplement photographs
- Details
 - Photograph: Great detail
 - Sketch: Eliminates unnecessary details
- Relationships between objects
 - Photograph: Limited by space
 - Sketch: No limitation

Uses or Purposes of Sketches

- Record the exact location and relationship of pieces of evidence and surroundings
- Refresh the memory of the investigator and witness
- Assist the prosecutor, judge, and jury to understand the conditions at the crime scene

Uses or Purposes of Sketches

(contd.)

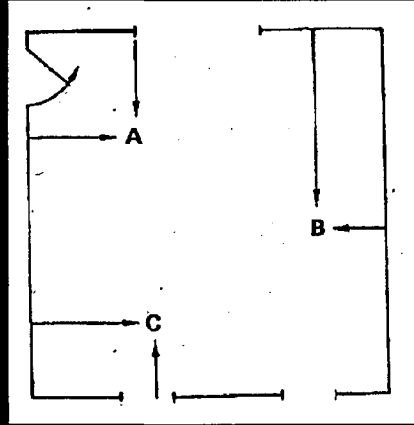
- Help in questioning suspects and witnesses
- Plan raids and roadblocks
- Record details of accident investigations
- Help correlate testimony of witnesses
- Eliminate unnecessary and confusing details

CONSIDERATIONS

- Level of detail necessary (will you need a second more professional version)
- Purpose of sketch
- View (wide, exploded, directional, perspective)
- Time limit
- Environment and weather
- Type of measuring equipment
- Use standard symbols
- Limit identifiers and words
- Label evidence with the same identifiers used with photographs and evidence collection

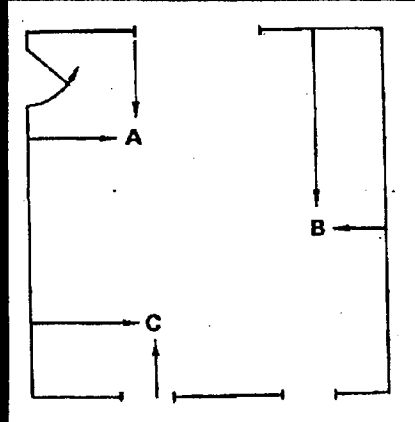
Rectangular Coordinates

- Point is located by making a measurement at right angles from each of two walls
- Works well for rectangular and square rooms
- Be sure that the measurements are made at right (90°) angles

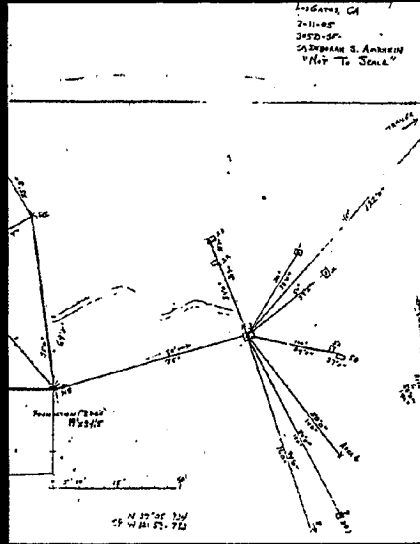


Rectangular Coordinates

- Works well for rectangular and square rooms
- Be sure that the measurements are made at right (90°) angles

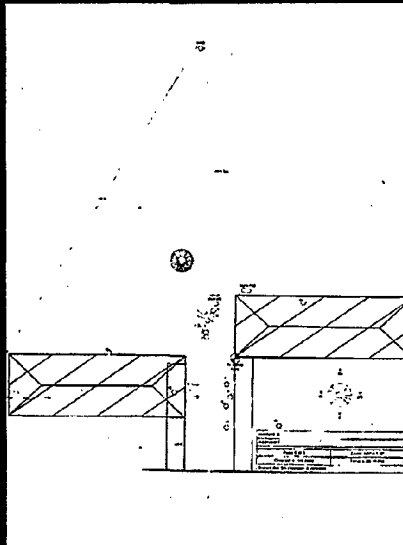


ROSE COMPASS



TRIANGULATION

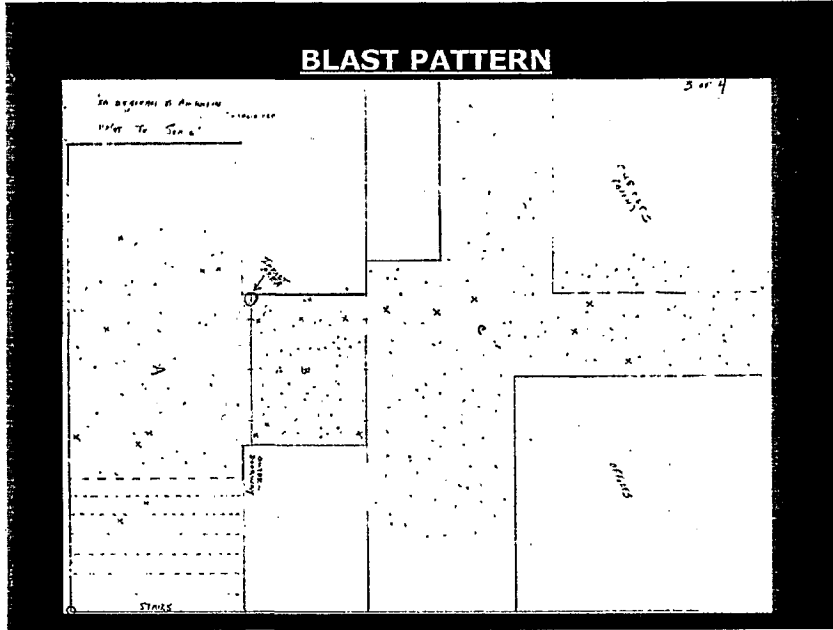
BASELINE (X/Y)



EVIDENCE KEY
(On separate page)

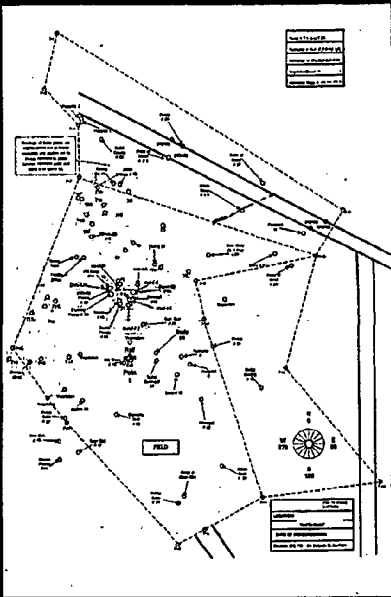
Evidence Key			
Evidence Number	Description	Horizontal Position	Vertical Position
18 (A)	Cloth	-3 ft. 5.0000 in.	-10ft. 10in.
19 (B)	Tissue (intestine)	-1 ft. 9.0000 in.	-16ft. 2in.
9 (B)	Tissue (intestine)	-2 ft. 3.0000 in.	-20ft. 1in.
10 (C)	Bone Fragment (Infant Skull)	-3 ft. 2.0000 in.	-22ft. 1in.
11 (E)	Shovel	14 ft. 7.0000 in.	-28ft. 2in.
17 (F)	Shovel	28ft. 0in.	24ft. 0in.
1	Hair	-9 ft. 4.0000 in.	20ft. 3in.
2	Cloth	-13 ft. 6.0000 in.	17ft. 10in.
3	Cloth	-15 ft. 3.0000 in.	19ft. 4in.
4	Hair	-11 ft. 9.0000 in.	15ft. 1 in.
5	Tissue	-13ft. 3in.	12ft. 8in.
6	Cloth	-12 ft. 6.0000 in.	10ft. 1 1/2in.
7	Body Part	-12 ft. 5.0000 in.	9ft. 0in.
13 (H)	Bone Fragment (Infant Skull)	-5ft.	1ft. 7in.
14 (N)	Cloth	-9 ft. 11.0000 in.	18ft. 4in.
15	Cloth in Burn Pile	5 ft. 5.0000 in.	28ft. 9in.
Grave (Center)	Burn Pile	-6 ft. 5.0000 in.	23ft. 2in.
Burn Pile	Burn Pile	5 ft. 5.0000 in.	28ft. 9in.
12 (D)	Bone Fragments (Infant ribs & skull fragments)		-25 ft. 6.0000 in.
-14ft. 7in			
		0 0000 ft.	0.0000 ft.

BLAST PATTERN

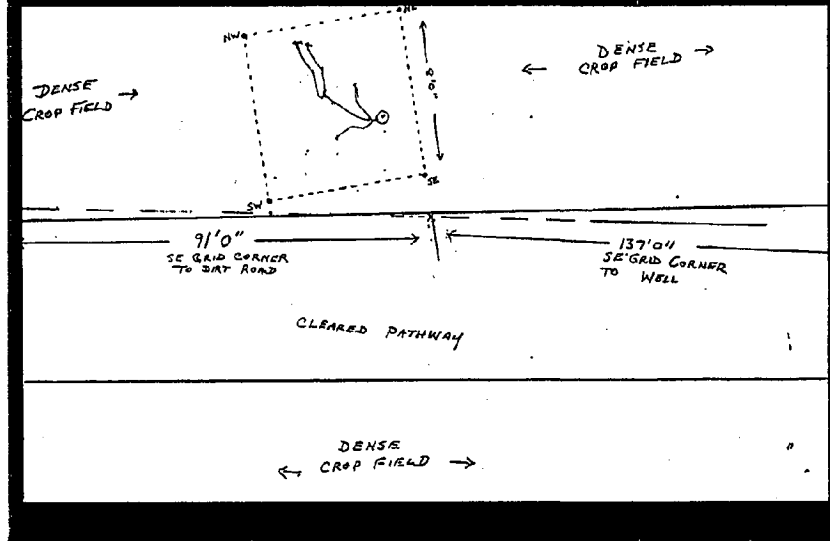


VISIO SOFTWARE

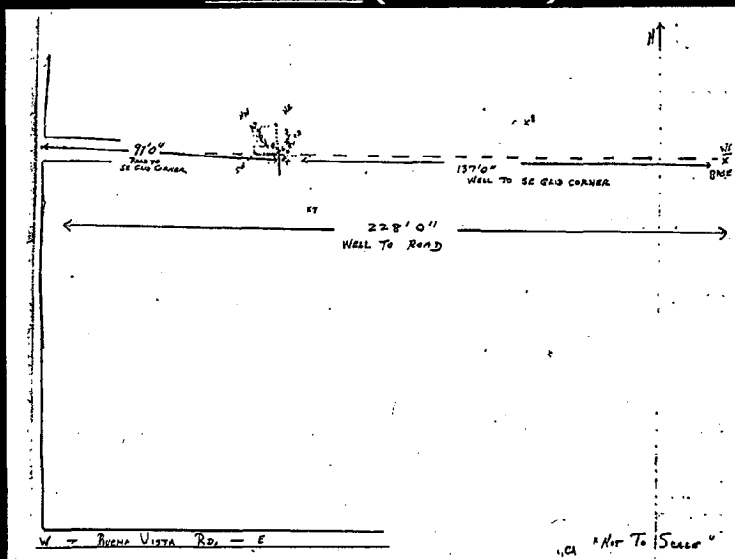
ROSE COMPASS



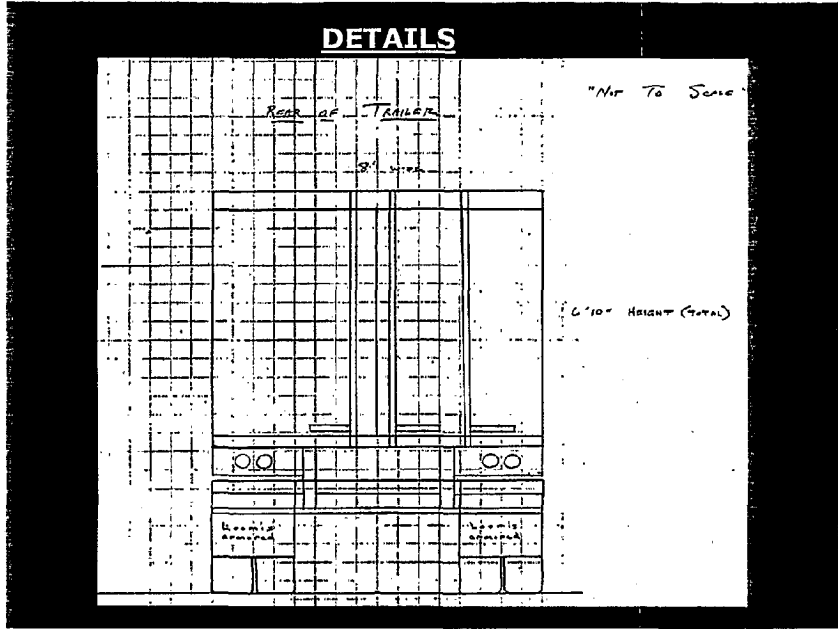
BASELINE (with details)



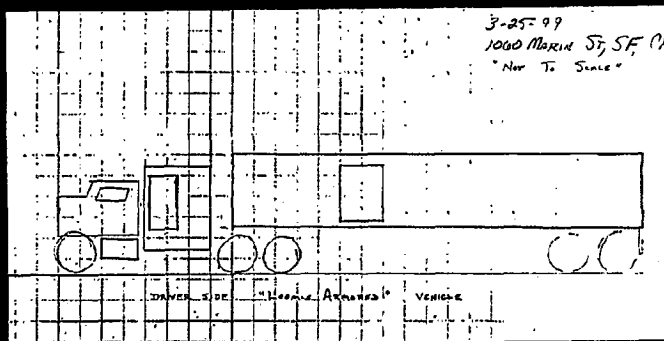
BASELINE (wide view)



DETAILS



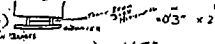
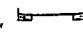
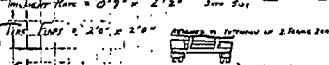
SIDE VIEW



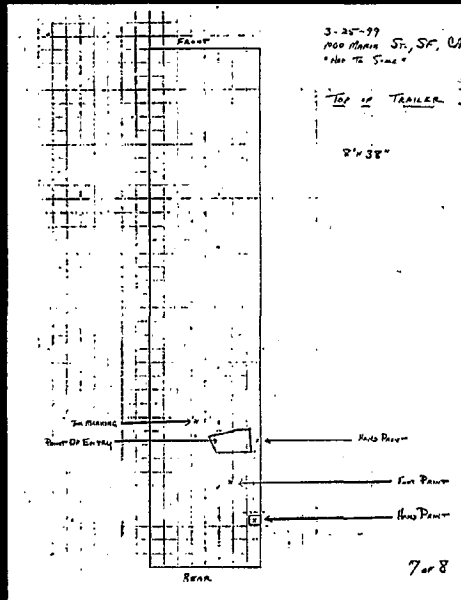
SEPARATE PAGE

- Notes
- Measurements
- Mini sketches

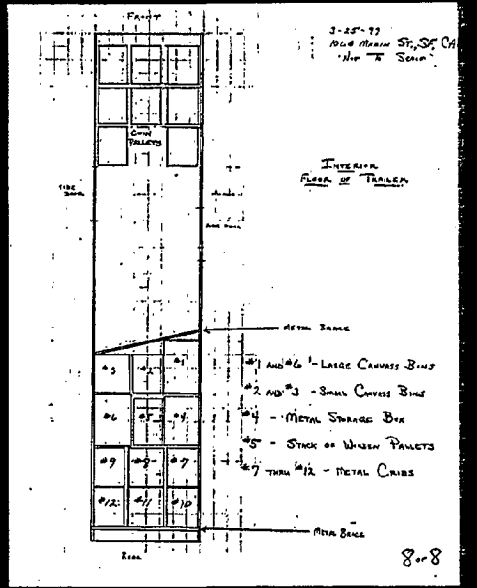
1. Measurements (cont'd.)

✓ Trailer Front Cas (Lower Side Window Width) = 1' 11/2"
✓ Trailer Front Cas (Upper Side Window Width) = 2' 1/4"
✓ Trailer Front Cas (Lower Side Window Height) = 1' 4"
✓ Rear Cas 1. Wall Thickness = 0' 1/8" min.
✓ Trailer (Side Door Dimensions) Dist. Base → Trailer Side = 0' 5"
✓ Trailer Side Dist. Lower Side (at bottom) → from Trailer = 10' 0"
✓ Trailer Rear (Ground to bumper) (dist. side) = 2' 3"
✓ Trailer Rear (Quarter over thickness) = 0' 1/2"
✓ Trailer Rear (Quarter in of seat → Trailer Side) = 1' 0 1/2"
✓ Trailer Rear (Ground - Trailer Base) = 3' 9 1/2"
✓ Trailer Rear Floor Base (width)  = 0' 3" x 2' 11"
✓ Trailer Rear Floor Base (from bumper to rear window) = 0' 5"
✓ Trailer Rear Bumper (width base - inside of door) = 0' 4"
✓ Trailer Rear Bumper (width base - outside of door) = 2' 2"
✓ Trailer Rear Bumper Flare = 0' 9" x 2' 2"  3/4" DIA. STEEL
✓ Trailer Rear Tire (dist. to 2' 0" x 2' 0" bumper)  BUMPERS TO BE MOUNTED TO 2' 0" x 2' 0" BUMPER
✓ Trailer Rear (Ground Side Dist. to base of Rear Door Base) = 0' 3 1/2"
✓ Trailer Rear Wheel = 8" dia.
✓ Trailer Rear Deck = 4' 0" wide
3-25-99
1000 #/sq. ft.
2 x 8"

TOP VIEW



INTERIOR DETAILS



Bombing shakes up Shaklee

■ Authorities explore motives of small explosion at Pleasanton firm, including whether animal rights groups were involved

By Kim Sautter and Susan Young

PLEASANTON — An explosive device rocked the headquarters of Shaklee Corp. early Friday, displacing hundreds of employees and raising questions as to whether the business was the target of domestic terrorism.

The blast occurred at 3:22 a.m. near an entry point on the southeast side of Shaklee, 4747 Wilbur Road, Pleasanton, Robert J. David spoke said.

He said he was unsure whether that area of the building normally is accessible to the public, and that a few security guards were on duty at the time of the explosion.

No one has claimed responsibility for the incident, and police said they are looking into all possible motives, including whether the blast may be related to the Aug. 24 bombing of Chiron Inc. in Emeryville.

A radical animal rights group, took credit for the earlier attack.

"We are now ruling out the possibility that it could be the same group that bombed Chiron," FBI spokesman said.

See BOMB, News 16



FEDERAL INVESTIGATORS search the ground near the site where an explosive device detonated early Friday at the headquarters of Shaklee Corp. in Pleasanton.



Animal activists speculate on blast

■ Extremists claimed responsibility for earlier bombing in August

By Jeff Miller and Alan Zitel

"We're still investigating these cases," FBI spokesman Anthony Martino said. "We are bringing it to light and we are not saying it's not linked — we don't know."



TRIAL PREP VERSION

